

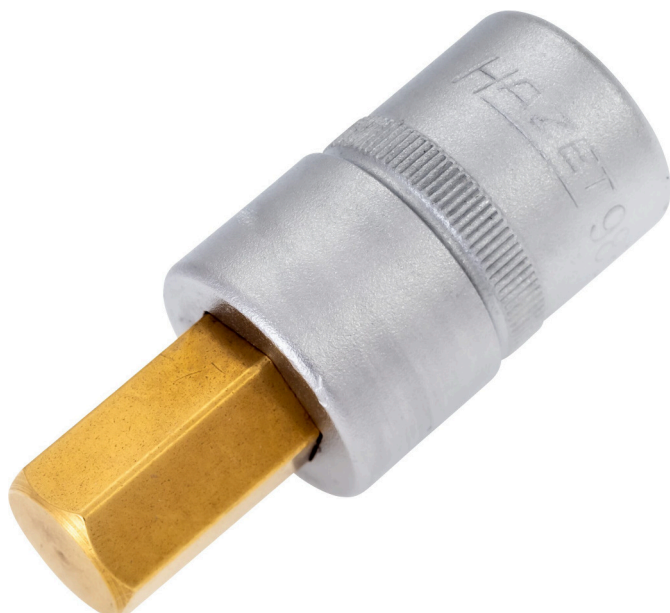
Product data sheet

986-14

EAN-No. 4000896046898



Size 14 mm · 1/2 ·



- Short design
- With knurling
- Surface:
- DIN 7422
- Made in Germany
- Drive: 1/2
- Output:
- Wrench size: 14 mm
- Dimensions / length: 60 mm
- Length l1: 22 mm
- Net weight: 0.14 kg
- For manual operation

Why choose TiN (Titanium Nitride) coating? A special coating process for extremely hard TiN coating guarantees high adhesive strength and wear resistance of the coating. Particularly suitable for continuous load, e. g. for industrial applications in industry and trade. Higher wear protection guarantees a longer lifetime. Perfect fitting accuracy due to optimum coating thickness. Optimized corrosion protection.

Order Number

986-14