

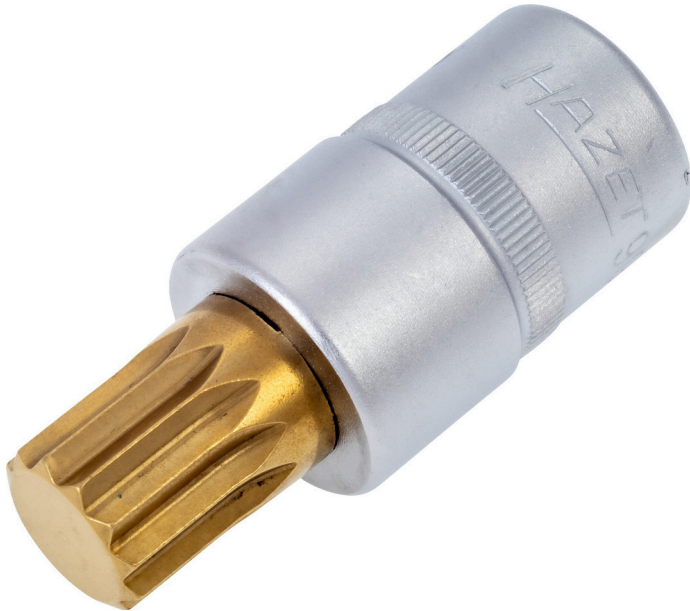
Product data sheet

990-16

EAN-No. 4000896047291



Size M16 · 1/2 ·



Application:

Operating brake calliper mounting screws on **VW Touareg**

- Short design
- With knurling
- Surface:
- Made in Germany
- Drive: 1/2
- Output:
- Wrench size: · M16
- Dimensions / length: 60 mm
- Length l1: 22 mm
- Net weight: 0.14 kg
- For manual operation

Why choose TiN (Titanium Nitride) coating?

- A special coating process for extremely hard TiN coating guarantees high adhesive strength and wear resistance of the coating
- Particularly suitable for continuous load, e. g. for industrial applications in industry and trade
- Higher wear protection guarantees a longer lifetime
- Perfect fitting accuracy due to optimum coating thickness
- Optimised corrosion protection

Order Number

990-16