

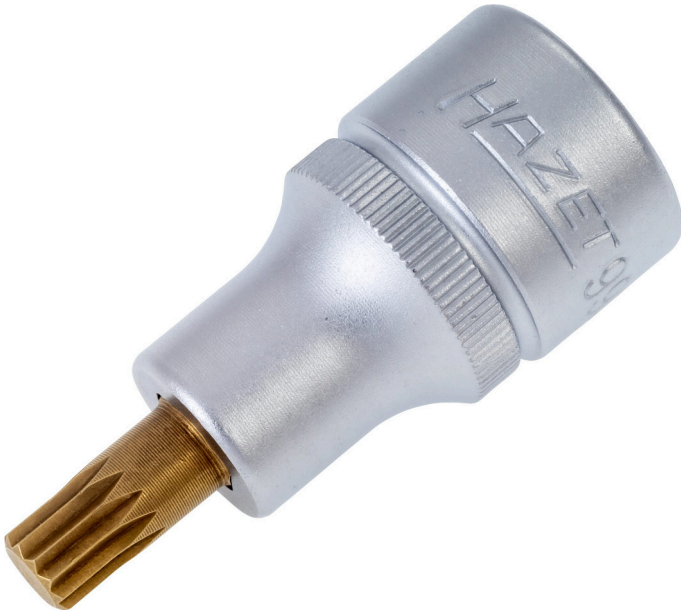
# Product data sheet

## 990-8

EAN-No. 4000896047321



Size M8 ·  $\square \frac{1}{2}$  ·  $\bigcirc$



### Application:

Mounting axle shafts

- Short design
- With knurling
- Surface:  $\blacksquare$
- Made in Germany
- Drive:  $\square \frac{1}{2}$
- Output:  $\bigcirc$
- Wrench size: · M8
- Dimensions / length: 53 mm
- Length l1: 15 mm
- Net weight: 0.05 kg
- For manual operation

### Why choose TiN (Titanium Nitride) coating?

- A special coating process for extremely hard TiN coating guarantees high adhesive strength and wear resistance of the coating
- Particularly suitable for continuous load, e. g. for industrial applications in industry and trade
- Higher wear protection guarantees a longer lifetime
- Perfect fitting accuracy due to optimum coating thickness
- Optimised corrosion protection

Order Number

990-8