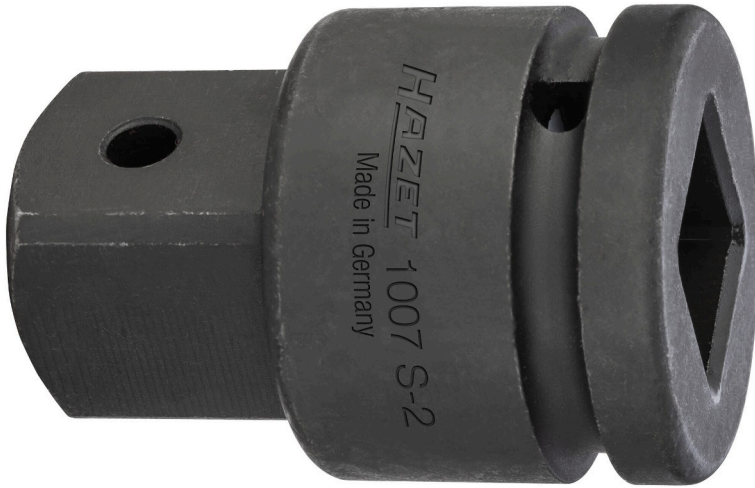


# Product data sheet

**1007 S-2** EAN-No. 4000896**001828**



Length: 65 mm ·  $\square$  20  $\frac{3}{4}$  ·  $\blacksquare$  25 1"



- Enlargement piece  $\square$  drive  $\frac{3}{4}$ " (20 mm) →  $\blacksquare$  output 25 = 1"
- With borehole for locking pin or safety spring and groove for O-ring
- Surface: phosphatized, oiled
- DIN 3121
- Made in Germany
- Drive:  $\square$  20  $\frac{3}{4}$
- Output:  $\blacksquare$  25 1"
- Dimensions / length: 65 mm
- Net weight: 0.48 kg
- For impact operation

Order Number

1007 S-2